



**FLEXI**

THE LEADING SOFTWARE FOR SIGNMAKING

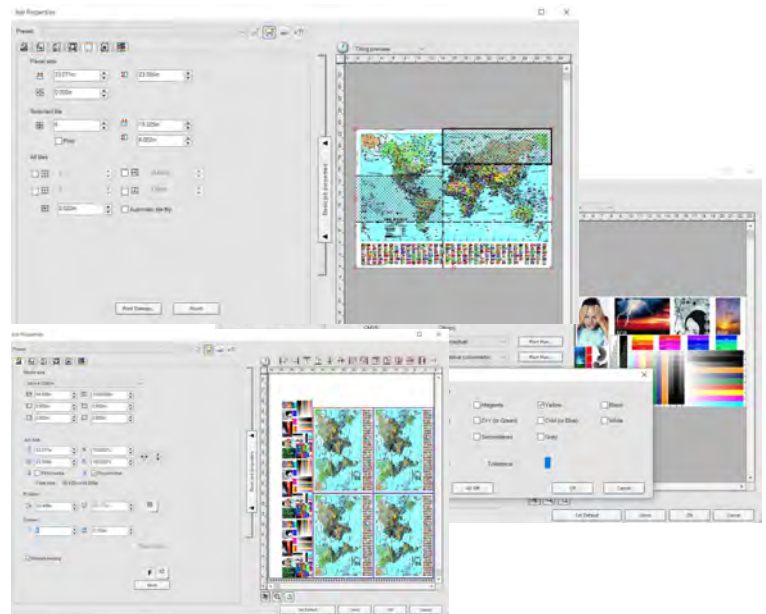
# FlexiPRINT SE

VERSION 12

This is the RIP solution with all the fundamentals needed for a single workstation environment. Send jobs to RIP and print directly from popular design applications such as Adobe Photoshop® and Illustrator®, QuarkXPress®, CorelDRAW®, and CAD/AEC/GIS engineering solutions.

## POPULAR PRODUCTION FEATURES AND BENEFITS


- Drives one wide-format printer
- Open or drag-and-drop TIFFs, JPEGs, EPS/PS and PDF files directly into the print queue
- Print directly from creative applications
- Fast, native PDF RIP handles file transparencies and complex files with ease
- Scale, crop, tile and colour correct in seconds right from within Production Manager
- Save the most media with automatic or manual nesting of jobs
- Automatically match PANTONE® spot colours
- Get more vibrant red, greens and blues with the unique CleanColour™ feature
- Includes hundreds of ICC media profiles to give you the print results you want
- Freedom to grow and upgrade to other productivity levels in the Flexi family



### The Next Step

- Upgrade to FlexiPRINT or FlexiSIGN & PRINT
- Upgrade from an older version of FlexiPRINT SE or PhotoPRINT SE
- Contact us to find an authorised dealer near you

# Top SAi Flexi Features

		SIGN & PRINT	Flexi (subscription)	PRINT	PRINT SE	SIGN	SIGN SE	DESIGNER	Flexi Design (subscription)
DESIGN	Artwork Approval Tool	●	●	●		●	●	●	●
	Animated Cut Viewer	●	●	●		●	●	●	●
	Define Cut Order	●	●	●		●	●	●	●
	3M, Avery, etc. Vinyl Colour Palette Libraries	●	●	●		●	●	●	●
	Multiple Contour Cut	●	●	●		●	●	●	●
	Gradients - SpotColour, RGB, CMYK	●	●	●		●	●	●	●
	Smooth Shadows	●	●	●		●	●	●	●
	Black & White and Colour Trace Vectorisation	●	●	●		●		●	●
	Adobe® PhotoShop® Bitmap Plug-In Support	●	●	●		●		●	●
	Auto Serialise Number and Text Fields	●	●	●		●		●	●
	QR Code Creator for Interactive Signage	●	●	●		●		●	●
	True Shape Nesting for Contour Cutting	●	●	●		●		●	●
	Grade 2 Braille	●	●	●		●		●	●
	Data Matrix	●	●	●		●		●	●
PRODUCTION	Interactive Tiling	●	●	●	●	●	●		
	Direct Vinyl Cutting	●	●			●	●		
	Banner & Canvas Finishing Tools	●	●	●					
	Textile Step & Repeat	●	●	●					
	Industry-Leading Print & Cut Workflow	●	●	●					
	Smart Hot Folders for Automated Workflow	●	●	●					
PRINTING	Full set of small to large format printer drivers	●	●	●	●				
	HTML Job Log for Production Reporting	●	●	●	●				
	Simultaneous Printing	3	5	2	1				
	Powerful Visual Tiling Tool	●	●	●	●				
	Automated and Manual Media-save Nesting	●	●	●	●				
COLOR MANAGEMENT	Choke & Bleed for Metallic and White Ink	●	●	●	●				
	CleanColour™ for Pure Hue	●	●	●	●				
	PANTONE® and Custom Spot Colour Matching	●	●	●					
	Easy and Fast Re-Calibration of Media	●	●	●	●				
	Quick Fine-Tune Spot Colour Matching Tool	●	●	●	●				
	Colour Replacement Tool	●	●	●					
	Wizard-Based ICC Media Profile Creation	●	●	OPT					
	 New in Flexi 12								



SAi North America  
 info@ThinkSAi.com  
 1800.229.9068 | 801.478.1900

SAi Europe, Africa, & Australia  
 info@ThinkSAi.eu | +32 2 725 52 95

Deutschland: FlexiTEAM  
 info@flexiteam.de | +49 (0) 40 54 80 83 50

SAi Latin America  
 MarceloC@ThinkSAi.com  
 + 11 2951-6228 | 98556-8198

SAi Japan  
 MasaS@ThinkSAi.com | +81 463 60 3804

SAi China, Hong Kong & Taiwan  
 KevinZ@ThinkSAi.com | +18621189970

SAi SE Asia & Middle East  
 Gavin@ThinkSAi.com | +91 88 88 99 45 25